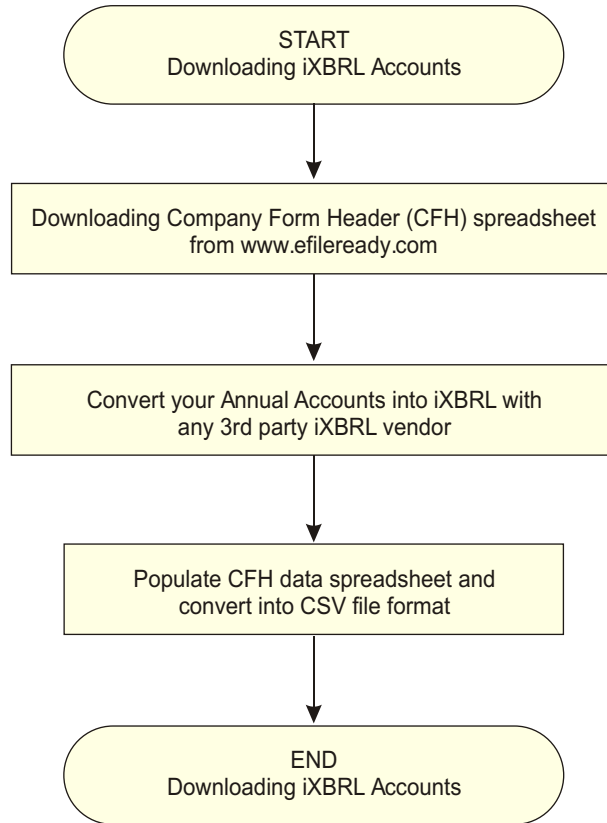
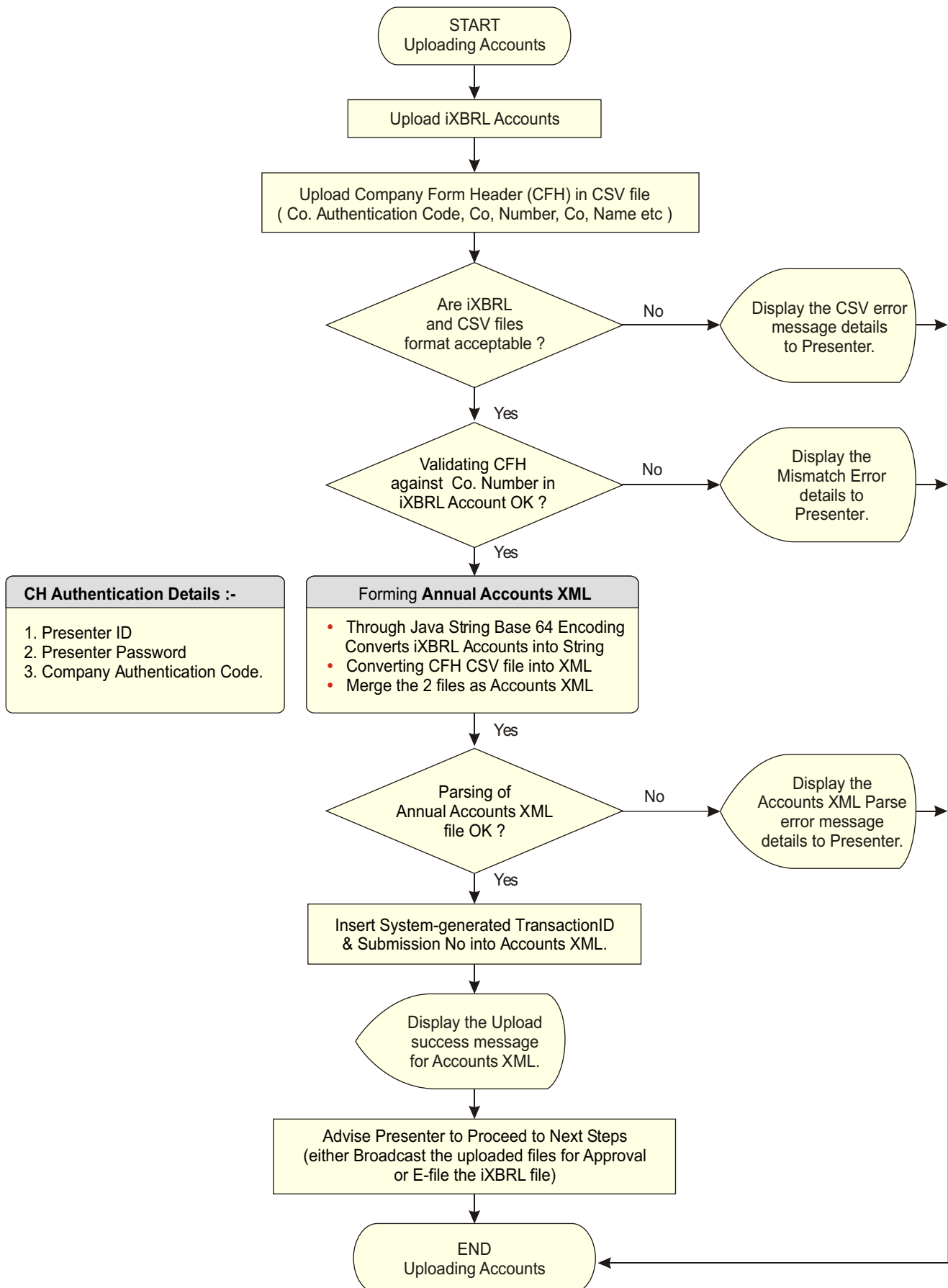


**Companies House (CH)
E-filing of Accounts
in iXBRL
Via www.**eFileReady**.com**

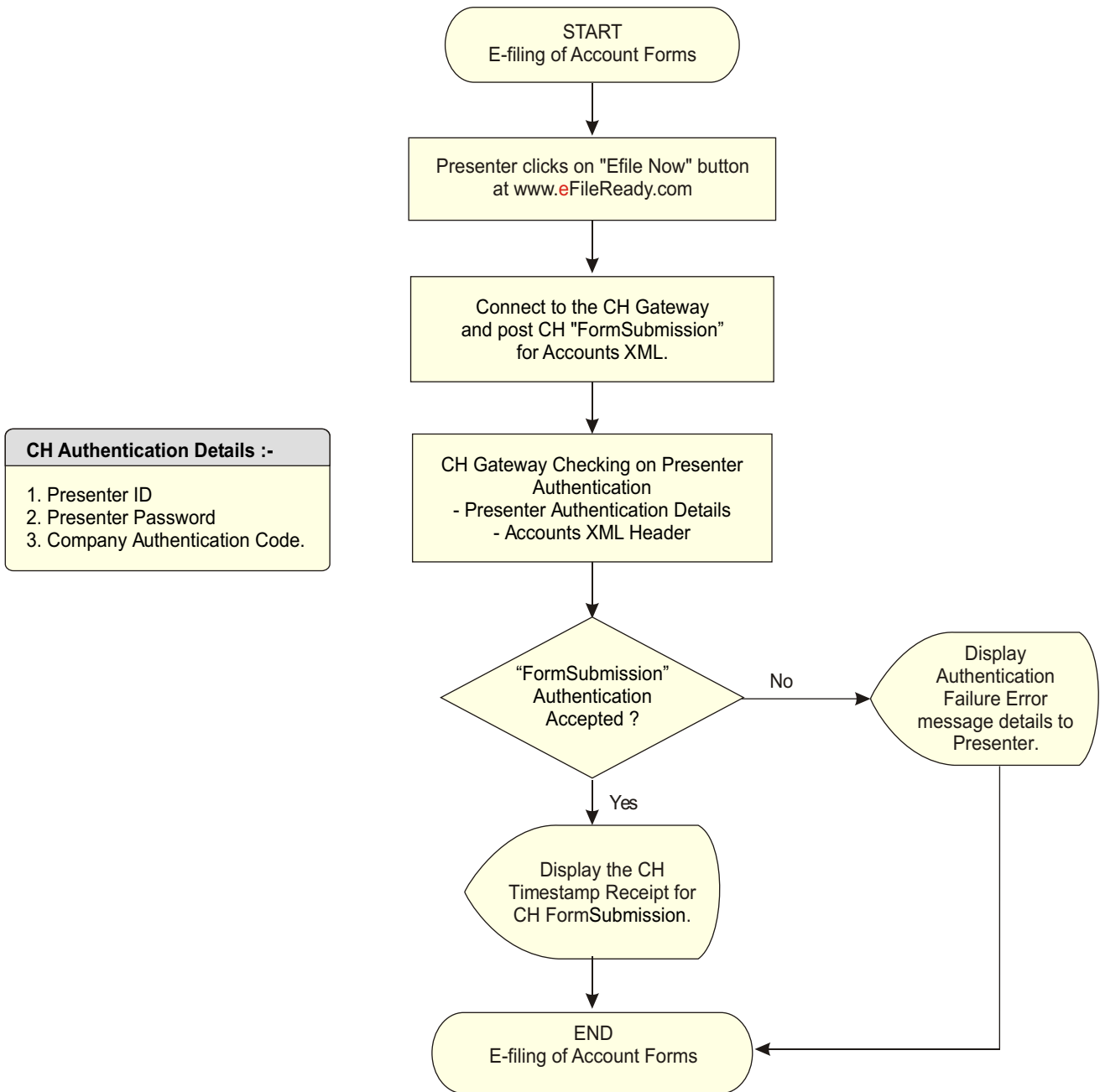
Step 1. Downloading iXBRL Accounts from www.eFileReady.com



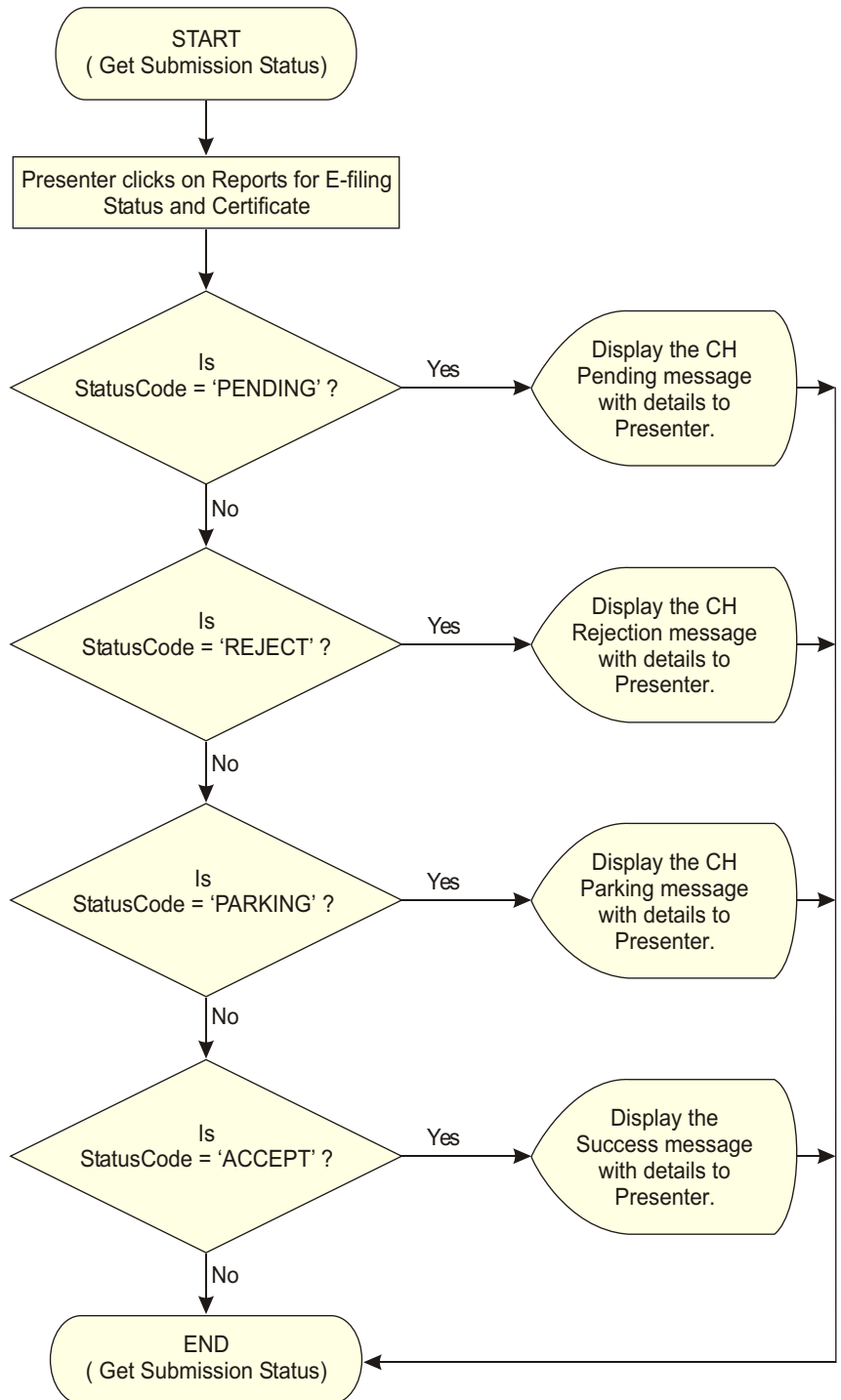
Step 2. Uploading iXBRL Accounts to www.eFileReady.com



Step 3. E-filing of Accounts to CH Via www.eFileReady.com



Step 4. E-filing Status & Certificate Via www.eFileReady.com



Note :

'Parking' means waiting further information from Presenter before further processing. There are no additional details from CH as to how Parking is to be handled